

Winchester

New Look

The Winchester has a unique semi-secluded lounge layout that separates the kitchen from the living space - making for a holiday home that feels both cosy and peaceful. In new sizes for 2019, the Winchester also caters for those who require a larger model, and has a brand new look.

Sizes:

 40 x 13 - 2 bed

 42 x 13 - 3 bed

Sleeps:

 6 people

 8 people

★ Standard Features

Exterior / Structure

- Energy efficient white PVCu double glazed windows and doors
- Fully galvanised chassis
- Aluminium cladding - standard colour Barley White

Interior Features

- Central heating system featuring high-efficiency condensing combi boiler
- Simply Better Build Integritas Wall System™
- Simply Better Build brushed chrome sockets and USB outlets

Lounge

- Freestanding L-shaped seating with fold-out sofa bed plus additional armchair
- Scatter cushions to lounge
- Simply Better Build wood burner effect electric fire & feature fireplace
- Display unit with mirror
- Freestanding TV unit and coffee table
- Wall art
- Wall mounted TV point

Kitchen

- Integrated 70/30 fridge freezer
- Simply Better Build Hotpoint integrated microwave
- Simply Better Build Belling double cavity high level oven, separate hob, statement cooker hood and extractor fan

Dining Area

- Freestanding dining table and fully upholstered chairs (two additional cylinder stools in three bedroom model)
- Full height storage cupboard

Main Bedroom

- King-size bed with lift-up storage system
- En-suite WC
- Bedside cabinets and additional overhead storage
- Dressing table and stool
- Upholstered headboard
- TV point

Twin Bedroom(s)

- 3ft single beds (2 bed model only) with upholstered headboard
- Bedside cabinets and additional overhead storage
- TV point

Family Shower room

- Signature shower
- Storage unit

✓ Regularly Specified Options

Outlook French doors

Exterior cladding - genuine timber, Canoxel® and rigid vinyl options

'Environmental Green' exterior and window frames

'Winchester Lodge specification' including Canoxel cladding, Residential specification BS 3632 (2015) and "Winchester Lodge" name badge

Storage footstool

Double bed to replace twin beds (second bedroom only)

Bath in place of shower (2 bed model only)

European specification

Simply Pawsome dog friendly pack

💎 Deluxe Pack

Upgrade to the Deluxe Pack and receive*:

✓ MP3 Bluetooth player

✓ Integrated washer/dryer

✓ Integrated full-size dishwasher

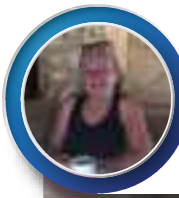
✓ Simply Better Sleep mattress upgrade pack

✓ Bedding pack - suggested colour Slate

*All items are available separately at a non discounted rate.







Pearl Bennett
Winchester, Bideford Bay Holiday Park

"This is the second Winchester I have owned and I am very pleased with my new model. It is just perfect for my site. It's nice to have a dishwasher in my new one and I love the high ceilings. There are very few holiday homes with the sofa facing the right and on my pitch the sea view is to the right so it is perfect!"





Winchester key highlights

- 1** The unique semi-open plan design of the Winchester guarantees some separation between the hustle and bustle of the kitchen and the peace of the lounge area.
- 2** The Winchester boasts the full Simply Better Build feature set to really make that extra quality difference, and is the most affordable model to do so.
- 3** The Winchester's hotel style master bed is perfect for those early nights after days spent out on adventures - and the en-suite also comes in useful for when guests stay over.
- 4** For those looking for all the conveniences our Deluxe Pack represents great value for upgraders - including a full size integrated dishwasher and Bluetooth MP3 player.



Master bedroom



Photography shows 40 x13 2 bed Winchester model. Equipped with Simply Better Build feature set, Deluxe Pack, BS3632 Specification and bath. Specifications and options accurate as of 20th August 2018. Any listed specifications or options are subject to change and are superseded by any subsequent publication. Product photography is intended for illustrative purposes only. Some of the items photographed (such as TV, DVD players, kettle, toaster and ornaments) are accessories used for illustrative purposes only and are not included in purchase. Your delivered holiday home may vary from product photography based on your selected specifications and the availability of materials.



Winchester family bathroom (with optional bath)



Winchester en-suite

Winchester floorplan



The Winchester comes in two sizes – both featuring the iconic semi-open plan lounge.

40 x 13 - 2 bed (sleeps 6)



42 x 13 - 3 bed (sleeps 8)



- Key:**
- Boiler
 - Fold-out bed
 - Fridge & freezer
 - Hob
 - TV space
 - Microwave
 - Storage cupboard
 - Cooker
 - Dishwasher space
 - Wardrobe
 - MP3 position
 - Electric fire
 - Dishwasher
 - Washer/dryer

Model designations shown for the above products are not definitive dimensions, for actual dimensions refer to table on page 105.